

CORONET

THE CORONET TECHNICAL INFORMATION PACK

Contact info:

THE CORONET THEATRE
28 New Kent Road
Elephant and Castle
London
SE1 6TJ
Admin: 0207 701 1500
Fax: 0207 701 1300

VENUE CAPACITY

- Total venue capacity for **Live music is 2600** (1900 downstairs standing & 572 upstairs seated).
- Total capacity for **Club night is 2800** (using entire venue plus arches)
- Seating is not installed in the downstairs area by default. It can be hired-in for the night resulting in a total downstairs seated capacity of around 500, along with the existing 572 fixed seats upstairs (1072 total seated across both floors).

MAIN AUDITORIUM

STAGE DIMENSIONS

- D = 6.865m
- W = 11.303m
- H = 10.541m
- Stage Height = 1.10m

STAGE, ROSTRA & DRESSING

- There are full-width black serge tabs (centre parting) upstage, with upstage and downstage fly bars. Stage left and stage right are dressed with two legs each side in black and a soft proscenium in red with closable drapes also in red.
- The stage is wooden with sound-friendly black lino on top.
- The floor of the theatre consists of a painted-grey concrete.

LIGHTING

INSTALLED CONTROL

- 1 x Avolites Pearl Expert
- 1 x Avolites Art2000 48 way 16A dimmer
- 2 x DMX buffer splitter
- 1 x KES 54 way hot power distribution system
- 4 x DMX from control to stage (house rig uses 2), 5 pin

BACK TRUSS

- 32ft 20" box truss
- 2 x bar6 Par64 Par cans CP61
- 2 x bar4 Par36 ACL
- 2 x bar4 Par64 ACL
- 4 x Mole Fay 4lite Blinders
- 6 x Moving head LED Wash lights -GLP Impression RZ 120
- 6 x Moving head Spot lights -Robe Colourspot 700E AT
- 4 x Martin Atomic 3000 Strobes

FRONT TRUSS

- 40ft 20" box truss
- 4 x bar6 Par64 Par cans CP62 (paired circuit outside-in)
- 2 x Source4 26 degree profile (paired circuit)
- 3 x Source4 15-30 degree zoom profile
- 4x Robe Colourspot 250AT
- 4 x Mole Fay 2lite

AUDIENCE TRUSS

- 24ft 20" box truss
- 2 x 400W UV cannon

ADDITIONAL EQUIPMENT FOR STAGE

- 4 x Robe Colourspot 700E AT
- 6 x Pixeltrack LED batten
- 2x bar6 Par64 Par cans CP61 (upright on tank traps)
- 1 x Magnum Smoke machine
- 1 x Jem 24/7 hazer
- 1 x Fan
- 6 x Tanktrap and pipe

MAIN BAR AREA EFFECT LIGHTING

- 2 x Pixeltrak Battens (in Main room bar)
- 2 x iShow4 Multicolour effect lights (in main room bar)

SOUND

FOH CONTROL

- 1 x Yamaha M7CL digital desk
- 1 x Sony/denon cd player
- 1 x Comms system FOH to Mons consisting 1 x base station, 2 x belt pack, 2 x headset

d&b SPEAKER SYSTEM INFILL

- 4 x d&b C4 top cabinets
- 4 x d&b C4 sub cabinets
- 2 x d&b D12 amplifier

d&b SPEAKER SYSTEM FLYING (J SERIES LINE ARRAY)

- 10 x d&b J8 cabinets
- 4 x d&b J12 cabinets
- 6 x d&b J sub (under stage)
- 14 x d&b D12 amplifier
- 2 x d&b flying frames and associated rigging

MONITOR CONTROL

- 1 x Yamaha M7CL digital des

MONITOR SYSTEM

- 10 x d&b floor monitors
- 5 x d&b D12 amplifier

SIDEFILL & DRUMFILL

- 2 x d&b C7 sidefill TOP
- 2 x d&b C7 sidefill SUB
- 2 x d&b P1200 amplifier
- 1 x d&b 1801 drumfill SUB
- 1 x d&b MAX drumfill TOP
- 2 x d&b epac amplifier

MICROPHONES, DI'S & STANDS

- 25 Assorted microphone stands
- 10 x EMO di boxes
- 1 x Shure B52
- 1 x Shure B91
- 5 x Shure SM81
- 5 x Sennheiser 409/509
- 6 x Shure beta sm57
- 2 x Sennheiser 606
- 1 x EV RE20
- 1 x Beyer M88
- 5 x Shure Beta 58

DJ EQUIPMENT

- 2 x Technics 1210 turntables
- 2 x Pioneer CDJ 1000
- 1 x Pioneer DJM800 mixer

INSTALLED POWER SUPPLY

Power is hard wired.

In addition to house dimmers/distro:

2 x 125A 3ph stage left

5 x 32A 1ph onstage(32A 1ph max ring main)

1 x 32A 3ph (+ separate ring main of 13As) at FOH lighting position

BACK STAGE

There are 3 artist dressing rooms, a promoter office and a large multi-purpose 'Green Room'.

1st Floor

Dressing Room + Toilet, Washbasin and Shower

- W = 2.262m
- L = 3.620m
- H = 2.362m

2nd Floor

Dressing Room + Toilet, Washbasin and Shower

- W = 2.274m
- L = 3.625m
- H = 2.865

3rd Floor

Dressing Room + Toilet, Washbasin and Shower

- W = 3.627
- L = 3.276
- H = 2.084

Promoter Office

- W = 2.342
- L = 2.435
- H = 3.031

1ST FLOOR BAR

Our upstairs performance space is a much more intimate venue, with a separate bar. Capacity is 400 (standing) with installed lighting and sound that is configurable for both DJ and live music.

* Live music PA upgrade is an additional cost, please ask for a quote*

Dimensions of space

- W = 22.225m
- L = 14.649m

Installed Lighting

- 4 x Par64 LED Par (manual setting only)
- 2 x Super Quark 'Disco' effect lights
- 4x inferno flame effect lights
- 2 x UV Tube
- (All sound to light)

Installed Sound

- 8 x d&b C4 sub
- 8 x d&b C4 top
- 2 x d&b B2 sub
- 4 x d&b P1200 amplifier C4
- 2 x d&b A1 amplifier B2
- 2 x Technics 1210 turntable
- 2 x Pioneer cdj1000
- 1 x Pioneer djm 800 mixer
- 1 x d&b floor monitor (Dj) with amplifier

2ND FLOOR BAR

The second floor bar is used as access to the seated circle and has the toilets for the first floor. Capacity is 125 (standing) with installed lights and sound that can be rigged to play music from the first floor DJ booth or from the main auditorium.

Dimensions of space

- W = 11.418m
- L = 13.995m

Installed Lighting

- 2 x iShow4 Multicolour Effect lights
- 4 x Par64 LED par can on sound to light

Installed Sound

- 4 x d&b C4 sub
- 4 x d&b C4 top
- 2 x d&b P1200 amplifier C4
- 2 x Technics sl 1210 turntable
- 2 x Pioneer cdj1000
- 1 x Pioneer djm 600 mixer
- 1 x d&b floor monitor (Dj) with amplifier

VIP ROOM

The VIP Room is a 100 capacity room with installed lights and sound that can be rigged to play music from the first floor DJ booth or from the main auditorium. It's ideal for private parties or afterparties. Please note it has no sight-line to the stage.

Dimensions of space

- W=6.6m
- L=11.7m

Installed Lights

- 6 x Par64 LED par can on sound to light
- 3 x 'Water' Ambient Effect lights

Installed Sound

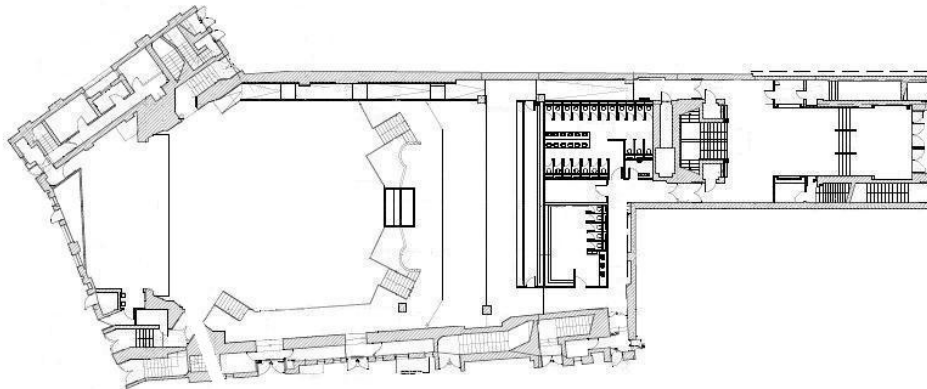
- 4 x d&b MAX top
- 2 x d&b F1 sub
- 1 x d&b P1200 amplifier MAX
- 1 x d&b P1200 amplifier SUB
- 2 x Technics sl 1210 turntable
- 2 x Pioneer cdj1000
- 1 x Pioneer djm 600 mixer
- 1 d&b floor monitor (Dj) with amplifier

Parking Access and Load In's

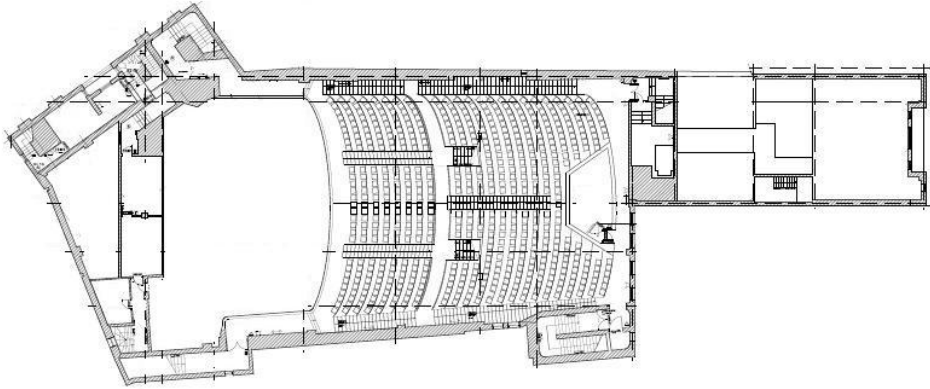
Unfortunately there is no backstage parking at the venue once the doors open to the public. There is an NCP next door which closes at 10:30pm and has a 6' 6" height limit. Dispensation for tour busses can be arranged from the local council at a small cost (promoter's cost and responsibility). The venue does have a loading bay which can easily fit an articulated lorry and has direct access to the stage and also to the auditorium floor.

FLOOR PLANS

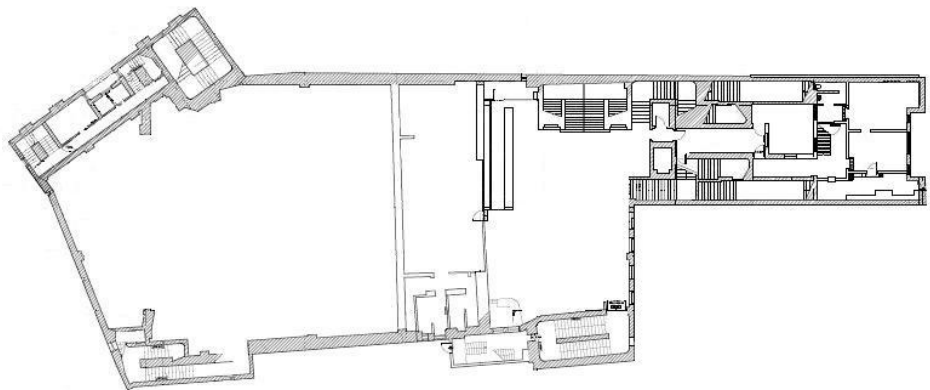
Main Auditorium



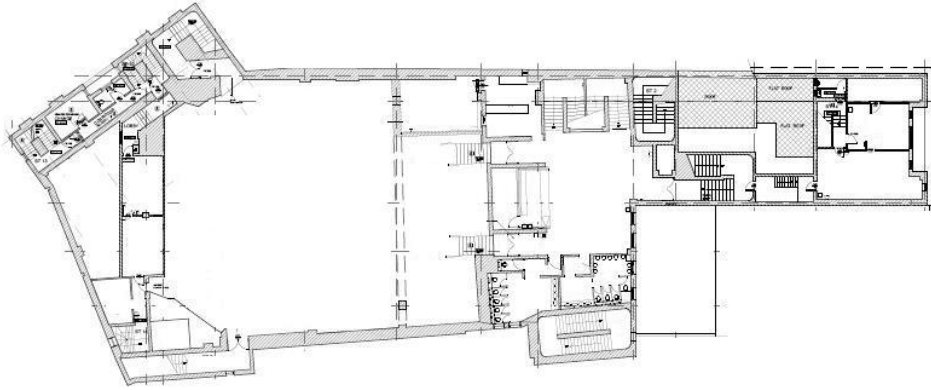
Main Auditorium (Plus Seated Circle)



First Floor



Second Floor



Contact info:
THE CORONET THEATRE
28 New Kent Road
Elephant and Castle
London
SE1 6TJ
Admin: 0207 701 1500
Fax: 0207 701 1300

For Live Music, contact: Richard Beck

For Club Nights, Sporting Events & Corporate Hire, contact:
Marcus Kay